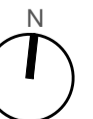
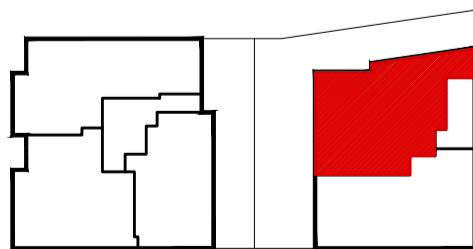
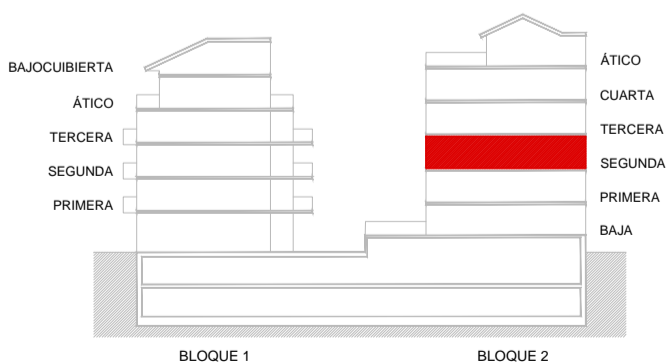


**BLOQUE-2
PLANTA 2ª VIVIENDA - B**

HALL - DISTRIBUIDOR	6,70 m ²
ESTAR - COMEDOR - COCINA	
ESTAR - COMEDOR	21,51 m ²
COCINA	9,98 m ²
DORMITORIO 1	10,03 m ²
DORMITORIO 2	9,61 m ²
DORMITORIO 3	11,57 m ²
BAÑO 1	3,53 m ²
BAÑO 2	3,07 m ²
TOTAL SUP. UTIL CERRADA	76,00 m²
TERRAZA S/2	9,71 m ²
TOTAL SUP. UTIL VIVIENDA	85,71 m²



ESCALA 1/50

0m 12,5m